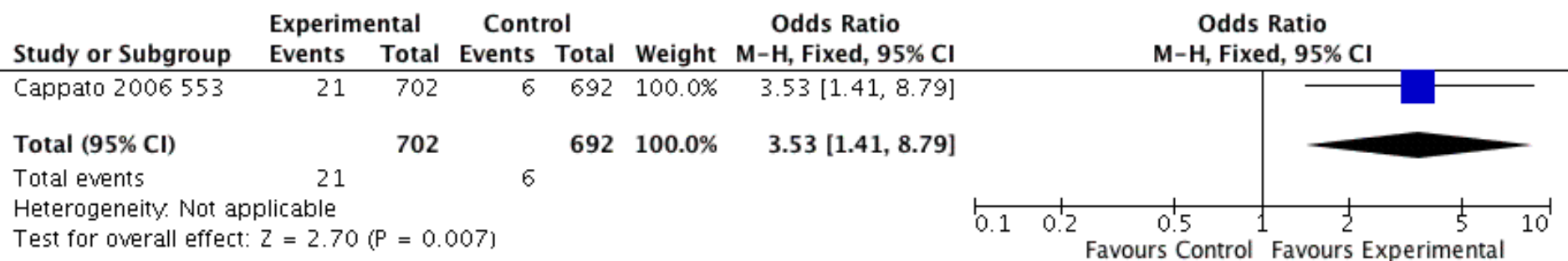


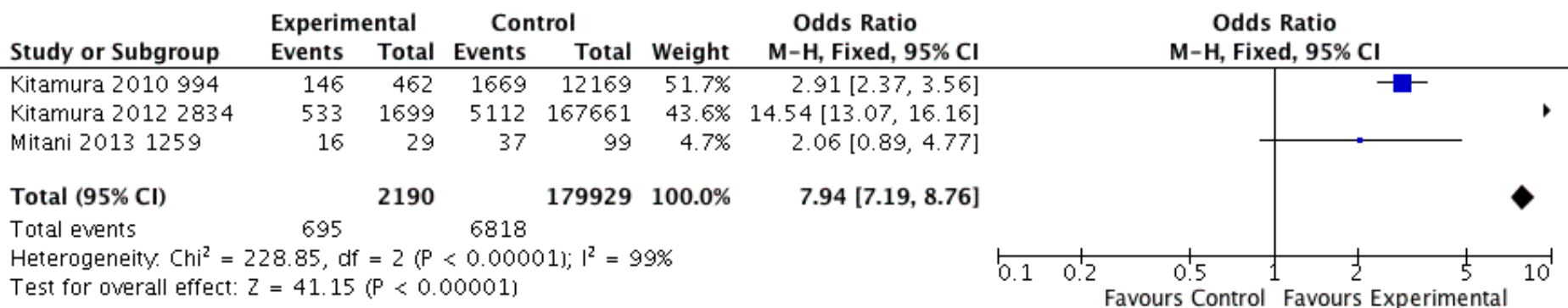
Figure 1 (Analysis 1.1)



Caption

Forest plot of comparison: 1 BLS 347 Public Access Defibrillation, outcome: 1.1 Survival 1yr FN.

Figure 2 (Analysis 1.2)



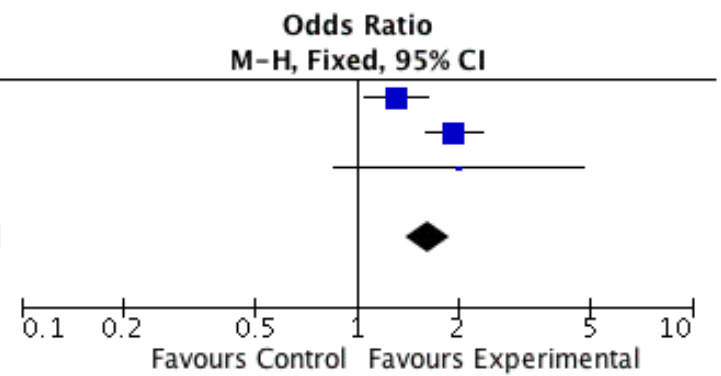
Caption

Forest plot of comparison: 1 BLS 347 Public Access Defibrillation, outcome: 1.2 Survival 30d FN.



Figure 3 (Analysis 1.3)

Study or Subgroup	Experimental		Control		Weight	Odds Ratio M-H, Fixed, 95% CI
	Events	Total	Events	Total		
Iwami 2012 2844	235	506	347	870	49.8%	1.31 [1.05, 1.63]
Kitamura 2010 994	172	462	2839	12169	47.5%	1.95 [1.61, 2.36]
Mitani 2013 1259	19	29	48	99	2.7%	2.02 [0.85, 4.78]
Total (95% CI)		997		13138	100.0%	1.63 [1.41, 1.88]
Total events	426		3234			
Heterogeneity: Chi ² = 7.35, df = 2 (P = 0.03); I ² = 73%						
Test for overall effect: Z = 6.64 (P < 0.00001)						

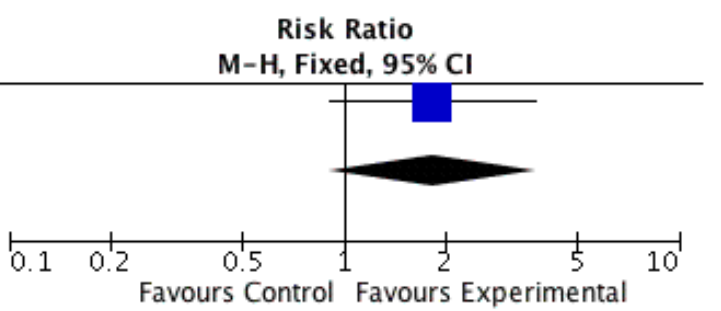


Caption

Forest plot of comparison: 1 BLS 347 Public Access Defibrillation, outcome: 1.3 Survival 30d.

Figure 4 (Analysis 1.4)

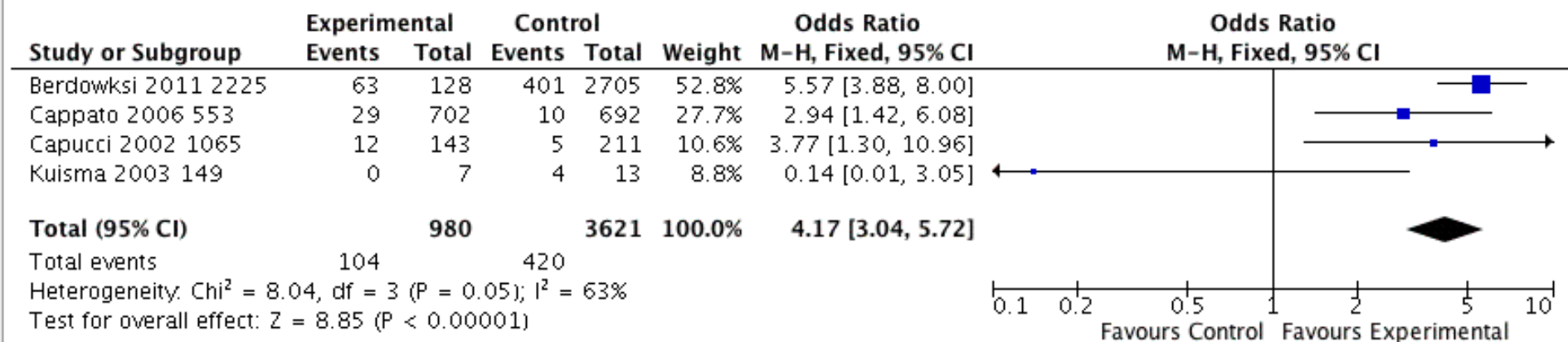
Study or Subgroup	Experimental		Control		Weight	Risk Ratio M-H, Fixed, 95% CI
	Events	Total	Events	Total		
Hallstrom 2004 146	22	128	10	107	100.0%	1.84 [0.91, 3.71]
Total (95% CI)		128		107	100.0%	1.84 [0.91, 3.71]
Total events	22		10			
Heterogeneity: Not applicable						
Test for overall effect: Z = 1.70 (P = 0.09)						



Caption

Forest plot of comparison: 1 BLS 347 Public Access Defibrillation, outcome: 1.4 Survival DC FN RCT

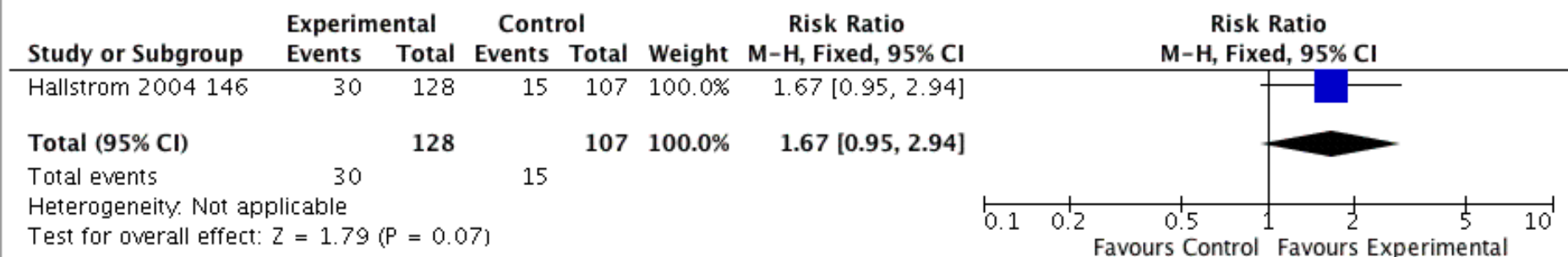
Figure 5 (Analysis 1.5)



Caption

Forest plot of comparison: 1 BLS 347 Public Access Defibrillation, outcome: 1.5 Survival DC FN

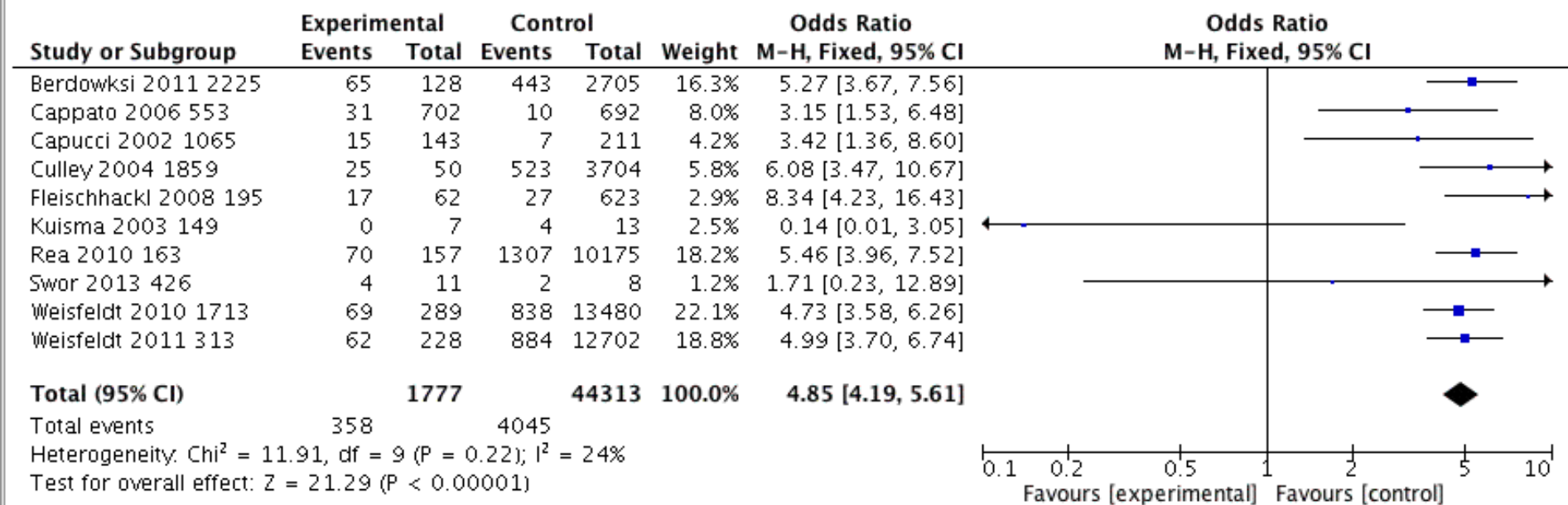
Figure 6 (Analysis 1.6)



Caption

Forest plot of comparison: 1 BLS 347 Public Access Defibrillation, outcome: 1.6 Survival DC RCT.

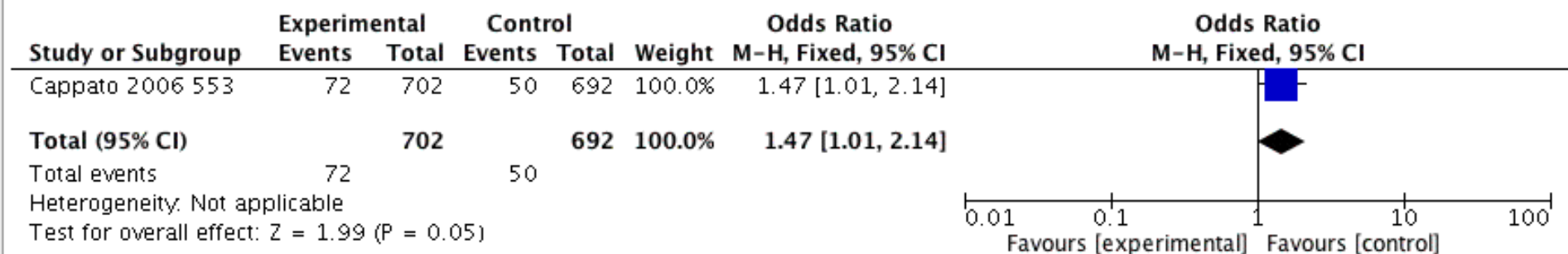
Figure 7 (Analysis 1.7)



Caption

Forest plot of comparison: 1 BLS 347 Public Access Defibrillation, outcome: 1.7 Survival DC.

Figure 8 (Analysis 1.8)



Caption

Forest plot of comparison: 1 BLS 347 Public Access Defibrillation, outcome: 1.8 ROSC.